

# Casa Scaron „ca dū re“

Municipality:  
Case sottane 12  
I-12070 Pezzolo Valle Uzzone

Postadress:  
Casa Scaron  
I-12074 Bergolo  
(located near Bergolo, the “Paese di pietra”)



## Casa Scaron – for the locals „ca dü re“

Casa Scaron lies 600 meters above sea level and belongs to the district Pezzolo Valle Uzzone. But the center of life is directed to Bergolo the artists village "Paese di pietra", which is only about one kilometer away and has much to offer. Next to traditional music festivals, the art exhibitions and the autumn market, the small village always finds ideas to set itself in the limelight, so the competition of the "Comune Fiorito" (category villages) was won thanks to a unique "floridity" of the village. Famous far beyond the frontiers are the Canté Magg and the terrific fireworks in autumn. The region of Alta Langhe is famous for truffles, wine (Barolo, Barbaresco, Barbera) and hazelnuts - and also for the excellent cuisine in the many restaurants and in every price range. Possible are beautiful cycling and trekking tours, one of the book "The 30 best hikes in the Piedmont" even leads through Bergolo. Some nearby horse farms offer horse rentals, riding lessons and rides. The Ligurian coast known as the "Riviera of Flowers" is reachable within one hour by car. The Piedmont has more than three dozen golf courses, the closest are 30 km away. And winter sports fans will also be amazed, in 90 minutes you are in Prato Nevoso a large ski resort in the Ligurian Alps, with over 20 ski lifts, 130 km of ski slopes and a wide range of activities.



The "ca dü re" was demolished completely in 2000 and built up again from scratch, only two cellars (the rear one is according to our surveyors from the Roman age) were left in original condition. The reconstruction was done with much heart and soul of the family business Balbiano, Pezzolo Valle Uzzone. According to ancient tradition, the joints of the exterior walls were rebuilt with the existing stones but without any visible cement supported. In parallel, on the inside brick walls were pulled up in between a good insulation. In the entrance area were utilized some old, big, hand-worked stones, probably from the castle ruins of the Bric delle Forche.



The roof from the inside with open exposed beams and a paneling cover of "Abete" leaves a warm and soothing effect. On the outside is the roof covered with ISOTEC, a modern insulation and bricks "Portugallo". For the ground of the upper floor were used traditional

bars 24x24 cm with roof planks of 35 mm. On top was laid tiles and a maple parquet floor. The entrance to the upper floor leads via a wooden staircase.



The windows with double glazing and the nature stone matching dark gray aluminum frames (Grigio Michelangelo) are leaving a modern impression. Wooden frames would warp due to the often too little stored wood and would have to be painted fresh regularly.. said the surveyor.

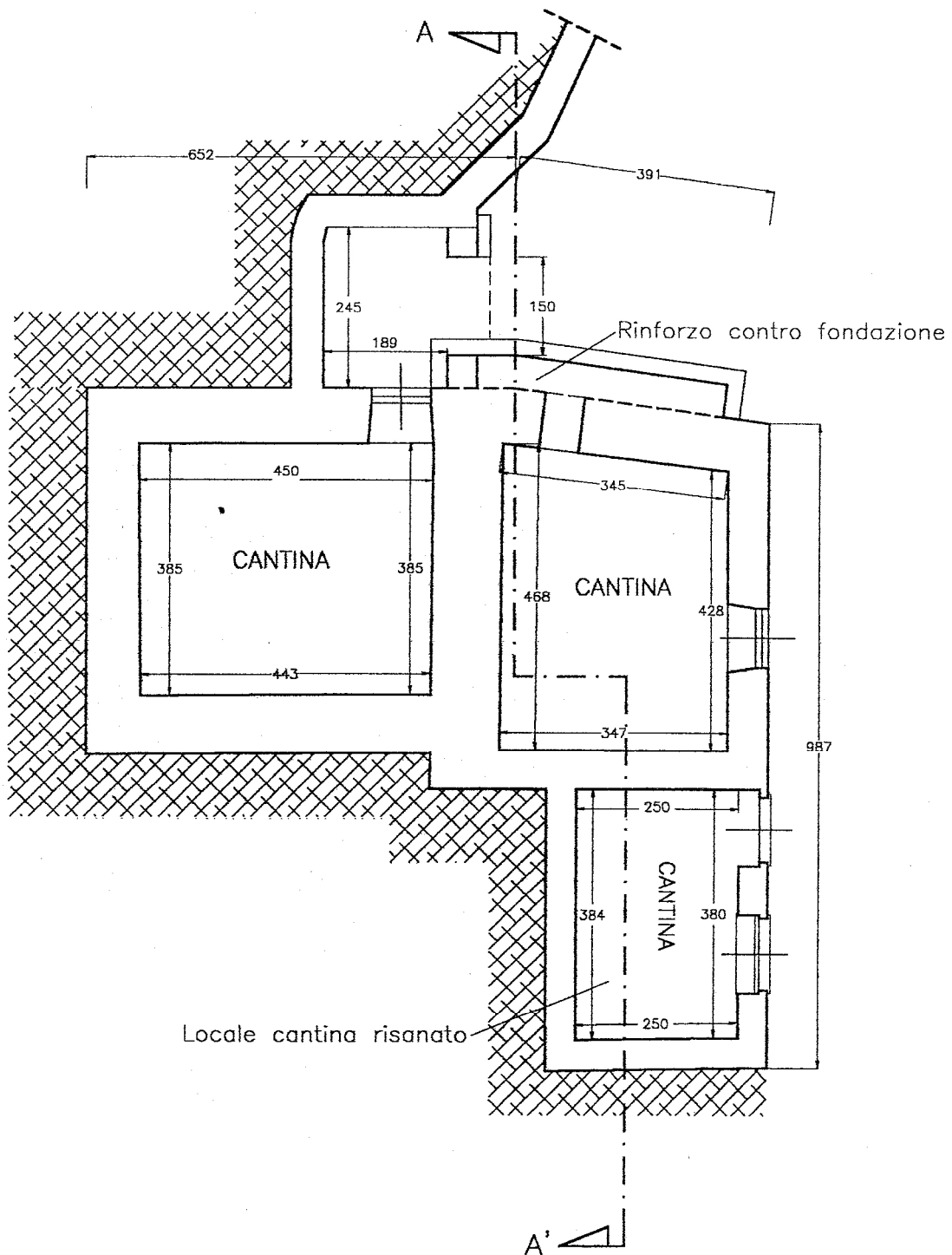
The central heating was substituted in 2009 from gas (GPL) by electricity through a Sanyo CO2 heat pump. The house has a 10 kW power supply and is protected by high-quality equipment TICINO in the hall and the kitchen.

The running water comes through the newly in 2002 laid pipes, from the "Acquadotto Alta Langhe" the source was from the vicinity of Mount Viso, we were told. The quality is according to studies comparable with a high-quality mineral water, and was almost 100% delivered - even if it was to hear of water shortage in this area.

For the drainage it was dug in the ground a biological wastewaters pit (Fosso Imhof) about 100 meters away from the house. Due to the great distance we have never perceived an odour. Of course, no solid objects and a lot of chemicals should get into the drainage, since this must be a natural decomposition.

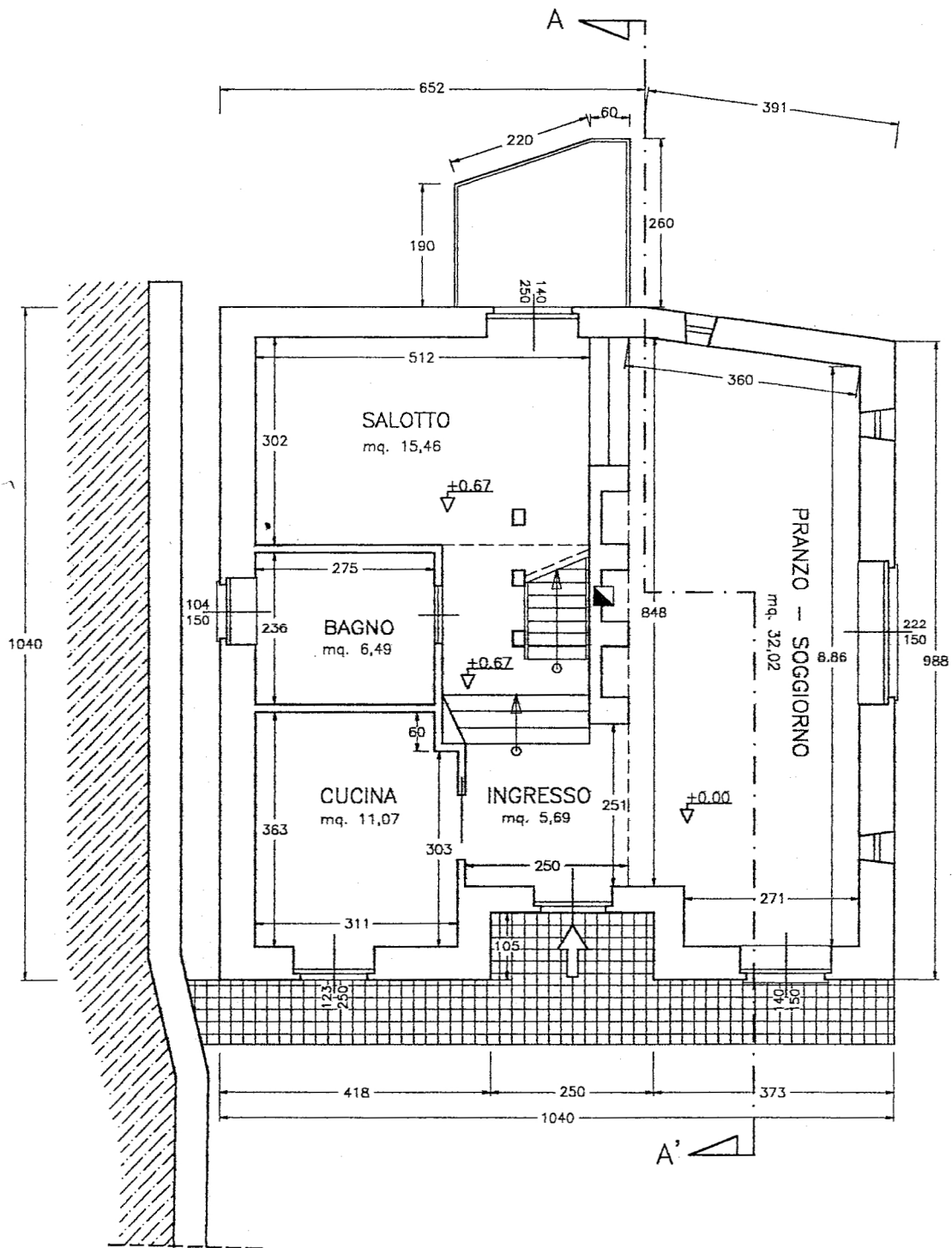
For the fixed connection of the Telecom a line exists to Pezzolo via Bergolo. The first 100 meters are as well as the power lines laid in the ground, so that no mast disturbs the view. The access to the internet is supplied by Wi-Fi of the company Elysynet and costs 20 € / month for a 2 MB connection. With satellite dish, dual LNB and the necessary receiver it is possible to receive via Astra and Hotbird, over one thousand German and other language channels. Available are up to four TV connections.

# Cellar (PIANTA PIANO SEMINTERRATO)



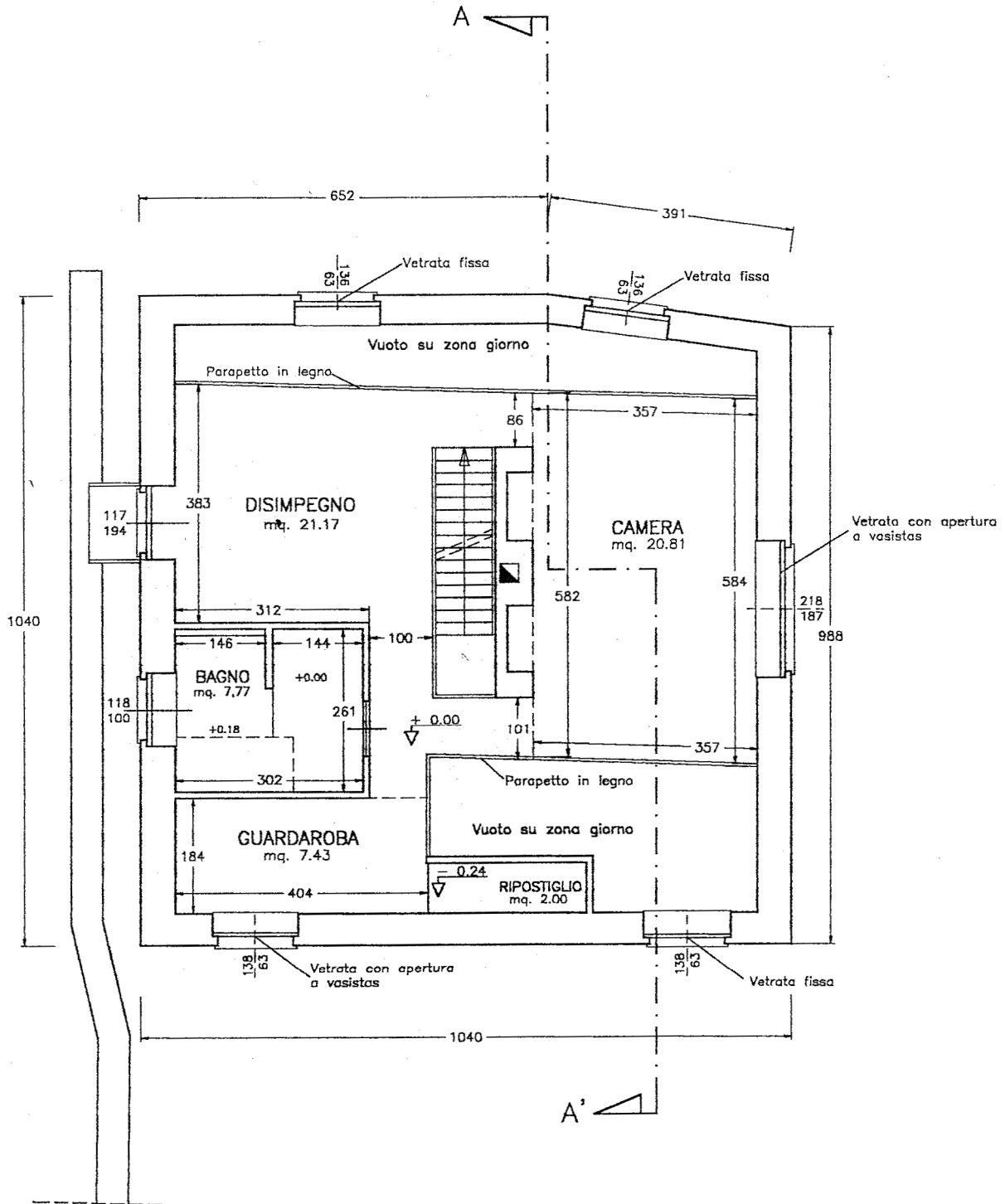
All the cellars are built at ground level. The "Cantina" up on the left is built into the rock - and has a high round arch made of stone up to 1.50 meters lengths. The cantina up on the right had later been built in front and also consists of a large arch. Thanks to natural ground both cellars prevail of a perfect climate for wine, cheese and food storage - these signs of the past were only provided with new wooden doors. The little "Cantina" with a large window was created out of bricks in the rebuilding of the year 2000. The floor is made of ceramic tiles.

# Ground Floor (PIANTA PIANO TERRENO)



From the fitted kitchen, including induction hob (4 rings), oven, dishwasher, refrigerator, a door leads directly to the herb garden and into the pergola. In the guest bathroom with shower is also placed the washing machine. Under the tiles an electrical, ecological soil heating has been installed resulting in a very comfortable environment. The large living room reflects old and new - the original stone wall with resting surfaces and the little "window hatches" is in contrast to the large modern window with a wide view in direction to the sea into the Valle Uzzone. The big Jotul stove gives a romantic and cozy atmosphere. The "Salotto" is our guest room and has a direct exit to the north on the front yard, which was prepared to be a winter garden.

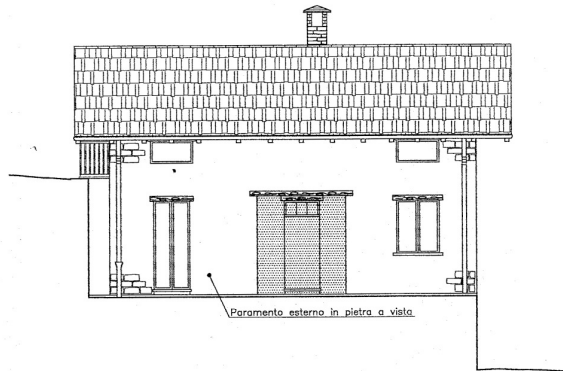
# Upper Floor (PIANTA PIANO PRIMO)



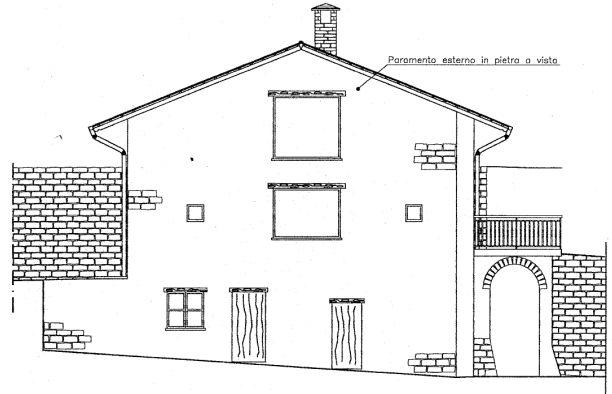
The spacious bedroom with built-in bookshelves, TV and wardrobes has windows on 3 sides to the north, east and south. Watching the sunrise through the large window is a repetitive spectacle. Also the view of the autumnal seas of fog remains unforgettable. The bathroom (also with soil heating) has a large bathtub and is decorated with marble covers. Some tiles contain pictures and at eye level is a facet. The wardrobe offers plenty of space for clothes or can be used as storage space. At the entrance is a small balcony (Ripostiglio) (?) The gallery is secured with a railing and offers a view down into the living room. In the "DISIMPEGNO" we have set up the office. All necessary connections for Internet and computers are available. A direct exit leads to the heat pump and on the way to the stable.

# The views

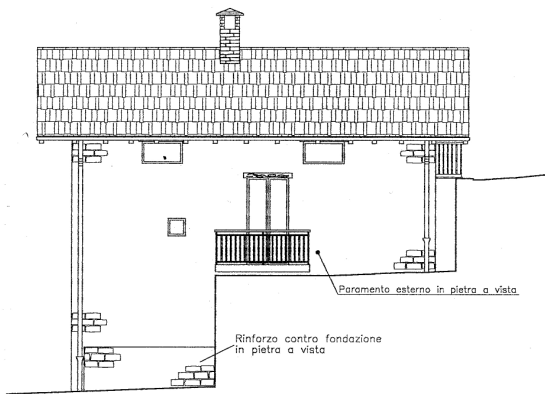
PROSPETTO OVEST (LATO CORTILE)



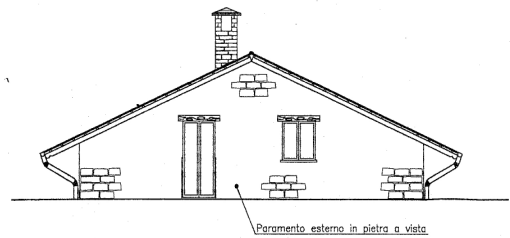
PROSPETTO SUD (LATO STRADA)



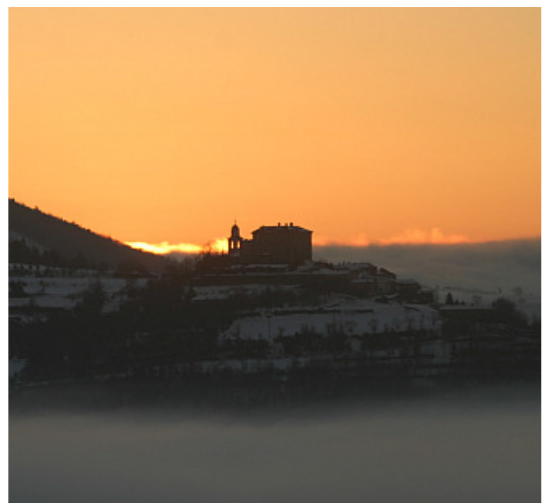
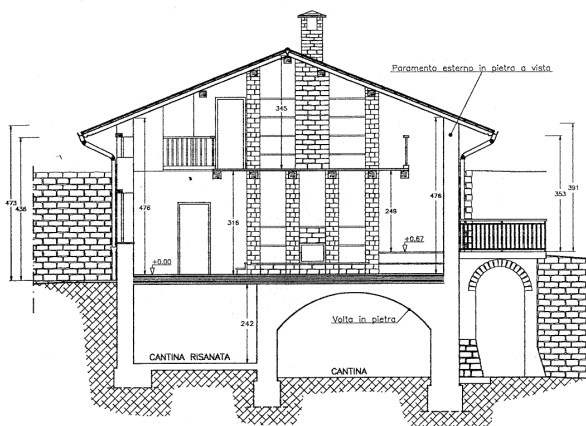
PROSPETTO EST



PROSPETTO NORD



SEZIONE A - A'



Wintry view from the bed

## The environment

The approximately 70,000 m<sup>2</sup> property includes seven adjoining parcels with meadows, forests, cultivated land and urban land. For our black-necked goats (rare breed), we have built in 2002 a stable of 12x6 meters. The marvellous panoramic location with view to the Alps, the village of Bormida and Uzzone as well as towards Bergolo, we have always liked, so we even planned the residential house there before. But the locals have convinced us that the existing location is better - the current south position with the Bric in the back had been previously observed for a long time and was then chosen after careful consideration. The stable is divided into three rooms and an attic. Towards the south, the roof has been extended on three pillars as a shelter. Approximately 15,000 m<sup>2</sup> of land are fenced "goats safe" (1.2 - 1.4 meters high Ursus wicker work, with a bar as a conclusion). The stable can be rebuilt from the year 2012 on for another purpose (10 years earmarked) Of course, other animals such as horses, donkeys, sheep, can be kept without much change.



The next major building phase was in 2005 with the carport and the stairs to the east entrance of the house. Up in front of the house was prepared a concrete slab of approximately 10x6 meters for an extension or a winter garden. The carport has about 3x6 meters and is designed well for turning. A small high storage of about 3x2 meters was created out of wood for tires, etc. – it needs a ladder to reach. Then we have replaced the "wavy" and sloping stone wall to the east (27x5 meters) by a shelter with cement bricks (Blocchetti). The December 2008 turned out to be a disaster for us: the self-constructed and weakly dimensioned wall was blasted by a lot of snow and water, then by icy cold and fell forward and smashed the machines below. The large meadow above with fruit trees slid too. The new shelter was then rebuilt in the summer of 2010 with reinforced concrete walls, calculated by the surveyor.

Above, the former big meadow needs to settle properly first, then fruit trees can be planted again or a biotope can be created. Further east, the workshop is located with the pool house of larch wood on a concrete base, where also is a pergola. The swimming pool Laghetto

Omega (diameter 4.80, depth 1.25) is dressed with a relaxation area of larch wood and offers a relaxing sun tanning and nice views.

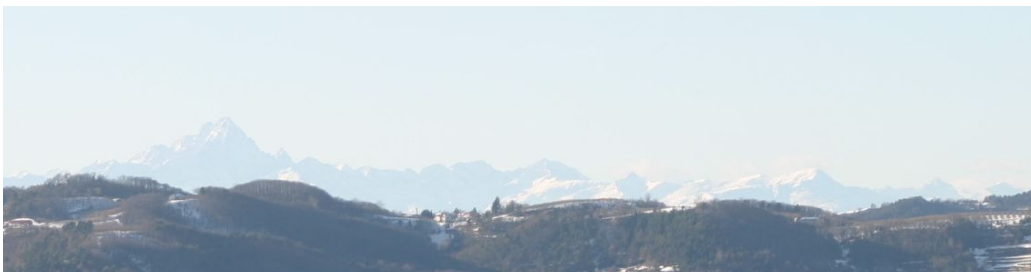


At the house we have planted a vegetable garden of 150 m<sup>2</sup> with a small garden shed. South of the garden is the chicken enclosure with a chicken coop for about 10 chickens. Our 3-5 hens have laid wonderful eggs, with which we were even able to provide the neighbors. Only when we have to buy eggs during the winter (laying pause) we realized how good an egg tastes of a livestock hen with food from kitchen waste.

## The Bric delle Forche

These days, the Bric is a legendary vantage point with a small transformer building for aerials no longer in operation. Only a number of large stones, partially worked by hand, are witnessing the medieval castle, where the farmers had to take their tributes of the manorial system. The locals say that in 1930 two gold coins were found and thus emerged a huge run for the "gold search". "Luciano" the ancient-Bergolese comes every year with his divining rod, repeatedly confirming the underground passages and tunnels, some of them 30-50 meters in depth.

The aerials were built for the supplies of the area around Torre Bormida and Cravanzana with television and radio, in return, the consortium paid the first 5 years our electricity bill. Due to the broadcasting via satellite they were no longer needed - but to remove them, no one is interested too much. A request for the installation of wireless antennas for mobile phones we declined with thanks. From excavations to reconstruction, observation tower, to an astronomical observatory there are discussions about again and again ... it's just nice to sit up there and look around the world.



## Feeling the nature and switching off

The Scaron is located far off from industrial centers, main roads and cities and there are many moments when "civilization" is hardly noticed. Here you actually switch off, listen inside yourself and escape the flood of consumer offerings. You can feel the simple, natural needs again – a good sleep – breathe in the scent of peppermint, broom and rosemary – enjoy biological, healthy homemade food out of the garden – get delighted by beautiful orchids – get warmed up by the fire place with self-felled wood - or simply count the stars...

Here insects have survived, which are extinct elsewhere (praying mantis, deer horn beetles). A large number of rare butterflies such as dovetail, sailing butterflies and nacre butterflies are meeting in the herb garden and the summer lilac bush.



Depending on the season one meets green lizards, fire salamanders, scorpions, snakes, wild boars, badgers, foxes, rabbits and deer. The incomparable cry of the buzzard hunting prey and the nightly concert of owls and little owls is a sign of intact nature. A special spectacle in the sky happens when the crows are driving away the "Poiana" with nosedives from the vicinity of their nest. Due to our winter feeding, great tits, blue tits and Buffy hummingbirds are regulars in the stone walls. The Jays have been playing some tricks by imitating the sounds of young goats, which we then searched in the wrong place. In spring innumerable, partly rare species of orchids are blooming, of which we have found about one dozen species in the environment itself.



The many nature trails, partly through the own forest are ideal for meditative walks. Just alone by the maintenance of the property one can experience active holidays and stay fit and healthy.

# The photovoltaic system

225 modules and three Solarmax 4200S). After intensive research on the Internet and a lot of pioneering spirit, an interest group was established. With about a dozen "German speaking" friends and acquaintances we have evaluated the best materials, bought on low price level the equipment and mounted it together. Our contract with the GSE lasts until August 2028 and guarantees a feed-in tariff of 42 cents / kW. During production, the current can be used free of charge, the excess is fed into the main power grid and the GSE remunerates according to market price (ascending) about 8-10 cents / kW. If the system doesn't give out any electricity (night, no sun, etc.) the ENEL power settles the consumption as usual - with the fixed costs of connection and kW power (10 KW).

In view of previous results, is the solar output per year at least 16,000 kW, which corresponds to an annual remuneration of € 8,000 and for the remaining 17 years around 136,000 €.



Since the produced power cannot even come close to be consumed completely, we have decided to replace the existing heating and hot water system of gas (GPL) with a 9 kW heat pump. This withdraws heat energy from the air and gives heat, independent of daytime and season. The 223 liter water tank can be heated up to 60 ° and provides much warmer water than the previous solution.

Heat pumps are using environmental energy from the air – of 100% energy requirement for heating up a building, provides for example, the environment 75%, the remaining 25% are coming from the electricity used to drive the heat pump. Heat pumps are heating with the sun, because the vast amount of energy from the environment is solar energy. This energy is free of costs, inexhaustible and constantly renews itself again. A heat pump heats with extreme low operating costs, which are up to 50% lower than any other heating system can be.

Nevertheless, it still leaves much power in abundance ... maybe soon even an electric car can be charged with it.

# Why the "Casa Scaron"

For us personally, the Casa Scaron is the dream home that meets our requirements. Of course, some further extensions like the winter garden, built-in pool, sauna, etc. could bring for others yet a little more quality of life.

**Optimal Location:** In the winter it is above the fog and generally warmer than in the valleys. Thanks to the southern location the snow melts away quickly and spring comes earlier. On hot summer days, the Bric is spending some shadow during the evening, and thanks to the level it is less hot. In winter, the sun is shining due to the low position well into the house and heats up. By the high level in the summer it is burning only on the well-insulated roof and the stone walls inside make pleasant temperatures possible. A few kilometers from the "Terra di Barolo" are no "chemical clouds", produced by the spraying of the vines (some by helicopter).

**Modern way of construction:** The high quality materials guarantee a pleasant "payable" temperature in rooms (there are many old buildings in the area where you can heat only a few rooms) during the winter. Due to the natural stone walls, the maintenance is very low (no peel off of the plaster, no painting needed).

**Proximity to Bergolo:** By foot in 15 minutes in the gourmet restaurant l'Bunet or in the Pizzeria - or quickly attending a concert - this means to live in spite of a little quiet secluded location. Additionally the Bergoleses are very open and appreciate it if one participates in the village activities.

**Size of the property:** The Scaron is certainly not suitable for a large family - for two to a maximum of 4 people however, is enough space. Visitors we usually housed in Bergolo because there are simple and affordable rooms in the "Lalveare" for 20 € (2-6 persons per room) or "better" Double rooms at Emilio for 60 €. Who prefers "exclusivities" finds in San Carlo in the Cortemilia with the family Zarri his suite. We saw many rooms and guest apartments, which were provided for relatives and friends ... and then mostly stayed empty and unused.

**Universal stable:** Until the year 2012, it may only be used for "agricultural" purposes. Whether it will then be expanded as a guest house or simply used for other livestock is left to the owner.



## **Life takes place outdoors:**

From the kitchen a door leads directly past the herb garden to the pergola. This is covered with brick and offers on hot summer days, a pleasant atmosphere with beautiful views.

Due to the large front yard some funny barbecue parties were held here already, partly with more than 30 people. The intact bakehouse needs to be heated up for 4 hours, but a fresh, crusty bread or a pizza is worth the effort.

**We are looking forward to your visit!**